



---

## CAR-T CELLS IN DLBCL

---

**Armando Santoro, Stefania Bramanti**

Ematologia e Oncologia Medica  
Humanitas Cancer Center  
Humanitas Clinical and Research Hospital IRCCS  
Rozzano (MI)

---

Retrospective study that analyzed response rate and survival outcome of salvage chemotherapy in R/R DLBCL patients

---

636 patients with relapsed refractory DLBCL defined as:

- no response to 4 cycles of initial chemotherapy or 2 cycles of salvage chemotherapy

*or*

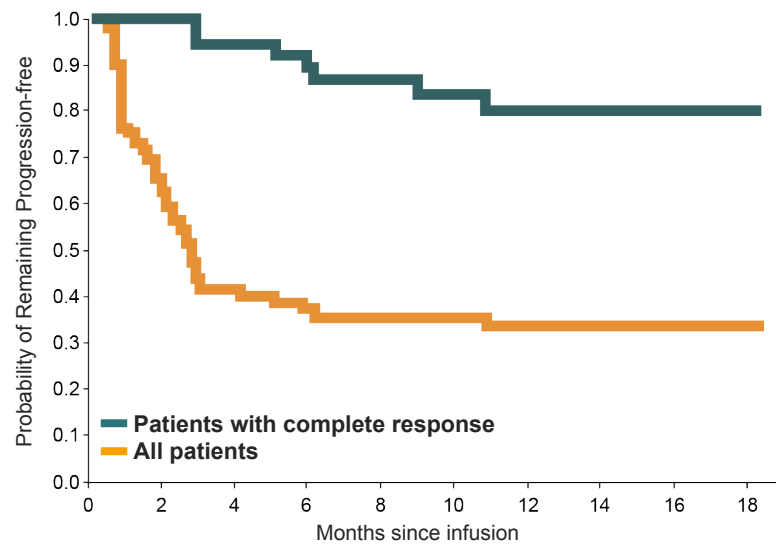
- relapse within 12 months after autologous stem cell transplant (auto-HCT).
- 

ORR 26%; CR 7%; median OS 6.3 months

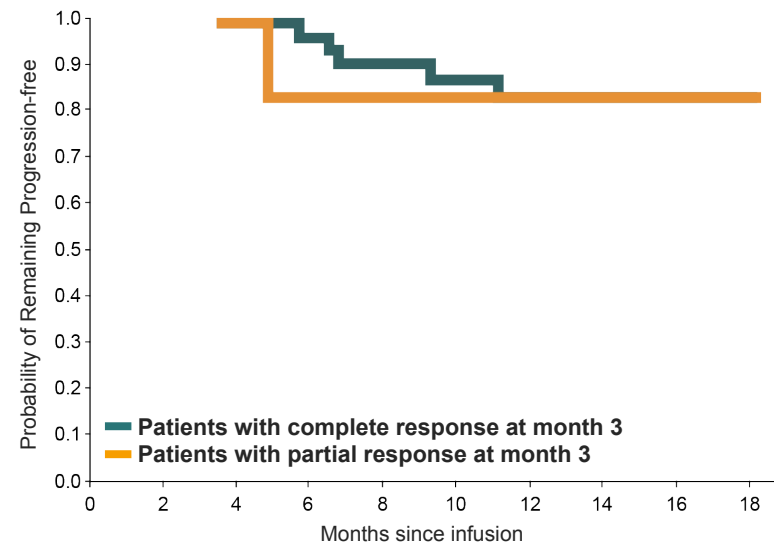
---

- CD19 specific, 41BB containing CAR-T, bulk CD3 cells using a lentiviral vector
- N=93 infused: ORR=52%, CR=40%
- Grade 3/4 CRS = 22% \* U Penn grading; Grade 3/4 NT = 12%

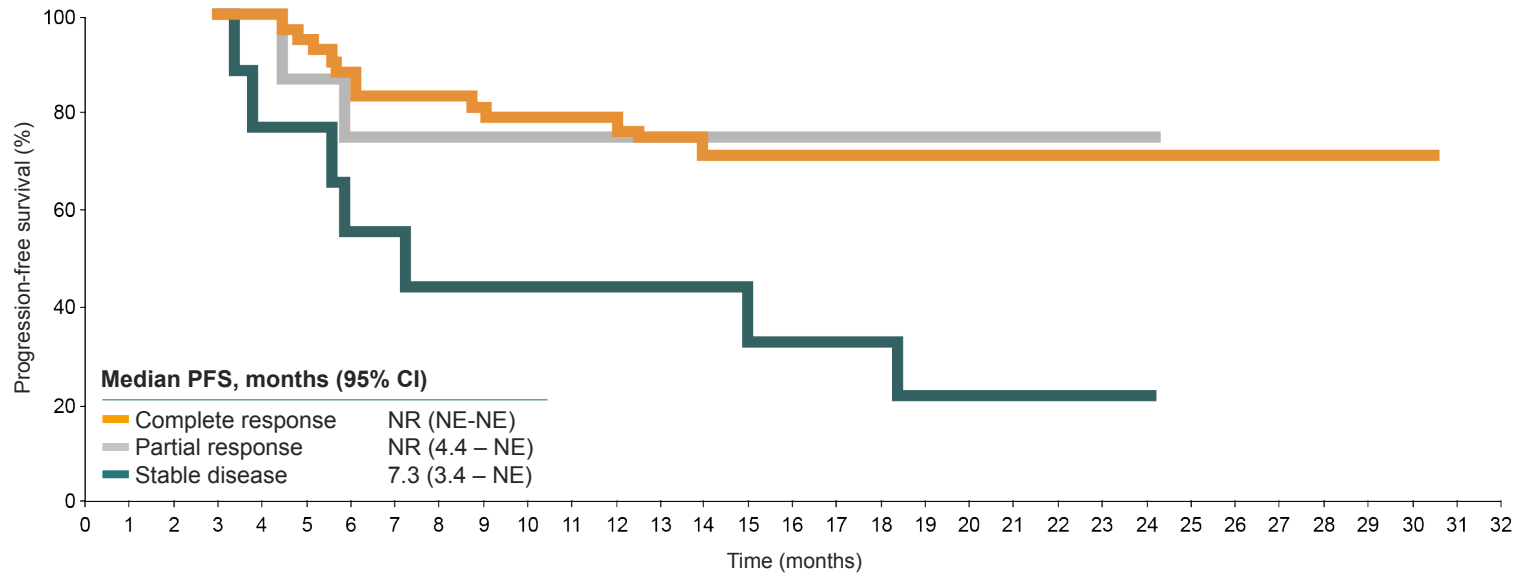
PFS



PFS AMONG PATIENTS WITH A RESPONSE



- CD19 specific, CD28 containing CAR-T, bulk CD3 cells using a retroviral vector
- 111 patients with relapsed refractory DLBCL, transformed FL and PMBCL were enrolled
- ORR 83%, CR 58%



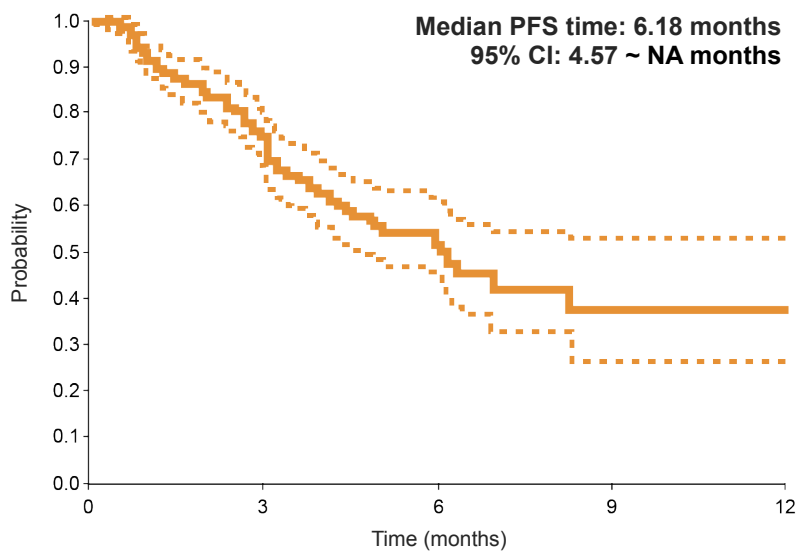
Characteristics	N=293
Age, median (range), y	60 (21-83)
Male, n (%)	189 (65)
ECOG 0-1, n (%)	232 (81)
2/3-4	44 (15) / 12 (4)
Disease stage III/IV, n (%)	240 (84)
DLBCL, n (%)	197 (68)
GCB/ABC, n/N (%)	151/253 (60) / 102/253 (40)
Double or triple hit/double expressor, n/N (%)	62/272 (23) / 97/272 (38)
PMBCL/TFL, n (%)	17 (6) / 75 (26)
IPI ≥ 3, n (%)	158 (55)
> 3 Prior therapies, n (%)	215 (75)
Primary refractory, n (%)	100 (35)
Refractory to 2L or later, n (%)	121 (42)
Relapsed post-ASCT, n (%)	95 (33)

124/286° (43%) patients would have been ineligible for ZUMA-1

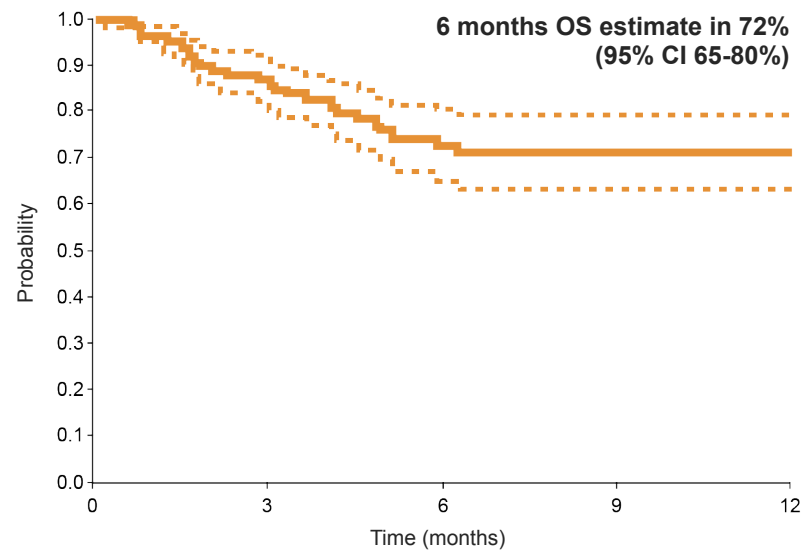
## REASONS FOR ZUMA-1 EXCLUSION

Criteria, n (%)	N=124
Platelets < 75	37 (13)
Active DVT/PE	27 (9)
Prior CD19 CAR-T cell therapy	24 (8)
GFR < 60	22 (8)
History of CNS lymphoma	22 (8)
Symptomatic pleural effusion	11 (4)
Ejection fraction < 50%	10 (4)
Prior alloSCT	7 (2)

**PROGRESSION-FREE SURVIVAL**



**OVERALL SURVIVAL**



	JULIET (tisa-cel)	ZUMA-1 (axi-cel)	TRANSCEND NHL 001 (liso-cel)
<b>Company</b>	Novartis	Kite/Gilead	Juno/Celgene
<b>Source</b>	Schuster, NEJM 2019	Locke, Lancet Oncol 2019	Abramson, ASH abs 2017
<b>Disease entity</b>	DLBCL, TFL	DLBCL, TFL and PMBCL	DLBCL, HGBCL, TFL (CORE cohort)
<b>Inclusion criteria</b>	<ul style="list-style-type: none"> <li>• ≥2 prior lines of therapies for DLBCL</li> <li>• PD after or ineligible for auto SCT</li> </ul>	<ul style="list-style-type: none"> <li>• No response to last chemotherapy or</li> <li>• Relapse &lt;12 months after ASCT</li> </ul>	≥2 prior lines of therapies
<b>Enrolment</b>	93 patients evaluable	108 patients evaluable	CORE cohort: 91 patients evaluated for safety; 65 patients evaluated for efficacy
<b>Patient population</b>	Prior therapies ≥3: 52% 49% ASCT 55% refractory	Prior therapies ≥3: 70% 23% ASCT 74% refractory	Median prior therapies 3 (2–8) 38% ASCT 67% refractory
<b>Efficacy</b>	Median FU 14 months ORR: 52%; CR: 40% 12-month OS: 49% Median OS: CR: NR; all: 11.7 months	Median FU: 24 months ORR: 83%; CR: 58% Median OS months: NR	ORR: 80%; CR: 59% 12-month OS: 63% Median OS: CR: NR; PR 10.3 months